

VARSITY HOSPITAL

- Removable gear tray with time saving plug & socket connection
- Ideal for general hospital lighting
- Integrated nightlight option
- All new easy to clean sleek profile
- Covered control gear as standard
- Energy efficient high frequency fused circuits as standard
- Polycarbonate controller option for use on defined escape routes

Varsity Hospital, as the name implies, is ideally suited to healthcare applications. Whilst retaining the sleek aesthetics of the Varsity range the Hospital variant incorporates additional features, such as a removable gear tray with plug & socket connection for rapid installation & maintenance, plus the option of an integral night light. The range is sealed to IP40 by virtue of its design, resisting dust and insect ingress. Varsity Hospital is the natural choice for general hospital area lighting.

131



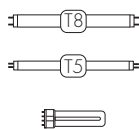
WHERE TO USE VARSITY HOSPITAL

- General hospital areas
- Nursing and rest homes
- Universities, schools and colleges
- Corridors
- Toilets

VARSITY HOSPITAL

LAMP OPTIONS

- 36W, 58W, 70W T8 fluorescent - G13 cap
- 28W & 35W (HE), 49W (HO) T5 fluorescent - G5 cap
- 7W TC 4-pin compact fluorescent (Night light) - 2G7 cap



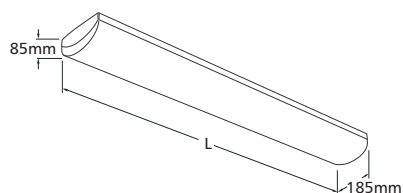
MATERIALS

- Body, gear cover & gear tray - sheet steel, powder coated in Permawhite finish
- End cap - Injection moulded ABS, colour matched finish
- Attachment - long life acrylic and flame retardant polycarbonate. All UV stabilised

INSTALLATION NOTES

- Suitable for direct fix or conduit mounting
- Central BESA cable entry position
- Additional fixing brackets available separately to provide 600mm BESA fixing centres
- 3-way, 2 x 2.5mm² terminal block
- Fused as standard
- Removable gear tray, mounted on keyhole fixings and with plug & socket connection
- Supplied c/w 4000K T8 or T5 lamps
- Compatible with Intellect Groupmaster - see page 36

DIMENSIONS



Lamp Rating		L (mm)
T5 lamps	T8 lamps	
1/2 x 28W	1/2 x 36W	1245
1/2 x 35/49W	1/2 x 58W	1545
-	1/2 x 70W	1809

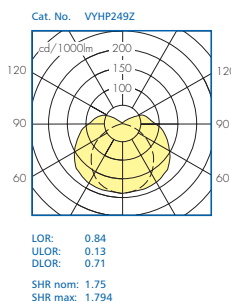
OPTIONS

- High frequency control gear as standard
- HF regulating versions on request
- Intellect Groupmaster technology detailed on page 36
- Choice of attachments, long life acrylic or flame retardant polycarbonate
- Fully integral emergency conversion, 3 hour duration
- Integral HF night light option available
- Intellem self test emergency versions available
- Suitable for use on defined escape routes when polycarbonate controller is selected
- Gear cover supplied as standard
- Opal diffusers available to special order (subject to minimum quantity)

SPECIFICATION

To specify state: F marked, IP40 surface luminaire, with flush attachments, removable gear tray with plug & socket connection, injection moulded end caps and high quality, durable post coat powder paint finish, as Crompton Varsity Hospital range, part no. _____

PHOTOMETRIC DATA



Utilisation factors / TMS		Room Index										
Reflectances			0.75	1.0	1.25	1.5	2.0	2.5	3.0	4.0	5.0	
C	W	F										
70	50	20	-	50	56	60	66	70	73	77	80	
30	-	-	44	49	54	60	65	68	73	76		
10	-	-	39	44	49	55	60	64	69	73		
50	50	20	-	47	52	56	61	65	68	71	74	
30	-	-	41	47	51	57	61	64	68	71		
10	-	-	37	42	46	52	57	60	65	68		
30	50	20	-	44	49	52	57	60	63	66	68	
30	-	-	39	44	48	53	57	59	63	66		
10	-	-	35	40	44	50	54	57	61	64		
0	0	0	-	32	36	40	45	48	51	54	57	
BZ-class			-	5	5	5	6	6	6	6	6	

See page 422 for Design Guide



Varsity Hospital showing gear tray with plug & socket connection and hinged gear cover





CATALOGUE NUMBERS

Lamp Rating	Gear Option	Cat No.	Weight (kg)	Emergency Cat. No.	Weight (kg)
For T5 lamps - supplied with prismatic polycarbonate controller & lamps					
1 x 28W (HE)	High frequency	VYHP128Z	3.49	EBVYHP128Z	5.91
2 x 28W (HE)	High frequency	VYHP228Z	4.05	EBVYHP228Z	6.47
1 x 35W (HE)	High frequency	VYHP135Z	3.96	EBVYHP135Z	6.51
2 x 35W (HE)	High frequency	VYHP235Z	4.53	EBVYHP235Z	7.08
1 x 49W (HO)	High frequency	VYHP149Z	3.96	EBVYHP149Z	6.64
2 x 49W (HO)	High frequency	VYHP249Z	4.53	EBVYHP249Z	7.21
For T5 lamps - supplied with prismatic acrylic controller & lamps					
1 x 28W (HE)	High frequency	VYHA128Z	3.78	EBVYHA128Z	6.20
2 x 28W (HE)	High frequency	VYHA228Z	4.35	EBVYHA228Z	6.77
1 x 35W (HE)	High frequency	VYHA135Z	4.36	EBVYHA135Z	6.91
2 x 35W (HE)	High frequency	VYHA235Z	4.93	EBVYHA235Z	7.48
1 x 49W (HO)	High frequency	VYHA149Z	4.36	EBVYHA149Z	7.04
2 x 49W (HO)	High frequency	VYHA249Z	4.93	EBVYHA249Z	7.61
For T8 lamps - supplied with prismatic polycarbonate controller & lamps					
1 x 36W	High frequency	VYHP136Z	2.79	EBVYHP136Z	4.95
2 x 36W	High frequency	VYHP236Z	3.72	EBVYHP236Z	5.88
1 x 58W	High frequency	VYHP158Z	3.68	EBVYHP158Z	6.10
2 x 58W	High frequency	VYHP258Z	4.44	EBVYHP258Z	6.86
1 x 70W	High frequency	VYHP170Z	5.69	EBVYHP170Z	8.47
2 x 70W	High frequency	VYHP270Z	5.89	EBVYHP270Z	8.67
For T8 lamps - supplied with prismatic acrylic controller & lamps					
1 x 36W	High frequency	VYHA136Z	3.09	EBVYHA136Z	5.25
2 x 36W	High frequency	VYHA236Z	4.02	EBVYHA236Z	6.18
1 x 58W	High frequency	VYHA158Z	4.08	EBVYHA158Z	6.50
2 x 58W	High frequency	VYHA258Z	4.84	EBVYHA258Z	7.26
1 x 70W	High frequency	VYHA170Z	6.19	EBVYHA170Z	8.97
2 x 70W	High frequency	VYHA270Z	6.39	EBVYHA270Z	9.17

Accessories

Description	Cat No.	Weight (kg)
Additional BESA mounting kit	VYBMK	0.25

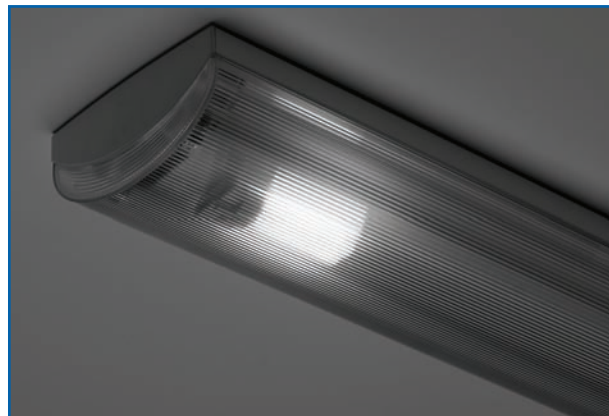
Available excluding lamps if required, simply add the X suffix to the end of the catalogue number (e.g. VYHP235ZX)

Integral 7W HF nightlight option available, simply add the NL suffix to the standard part number. (e.g. VYHP258ZNL)

Emergency versions available with automatic testing functionality - see page 188 for system features
Contact our Technical Support and Application department for further details, telephone 01302 303350



Varsity Hospital integral night light detail



Integral nightlight operating during the night