

DRG

- Heavy duty vandal resistant construction
- IP65 dust tight and water jet proof
- Attractive and functional grille and pattress, allowing flush fixing over conduit
- Tamper resistant security screws
- Matching range of emergency options


A strong die cast base and tough, tamper resistant polycarbonate diffuser affords the DRG range a very high level of vandal resistance. The range's style and resilience is further enhanced by an optional die cast aluminium grille and pattress kit, which is close fitting, has functional security screws and adds conduit entry options. Yet whilst robust, DRG is also stylish and attractive and will blend into a variety of contemporary and period applications, both interior and exterior. A comprehensive choice of integral self-contained and slave emergency versions provide a stylish solution for emergency escape routes in any location.



WHERE TO USE DRG

- Exterior locations
- Retail
- Hospitals
- Car parks
- Sports and leisure centres
- Building perimeters
- Gardens and parks
- Architectural landscapes
- Universities, schools and colleges

**IP65****LAMP OPTIONS**

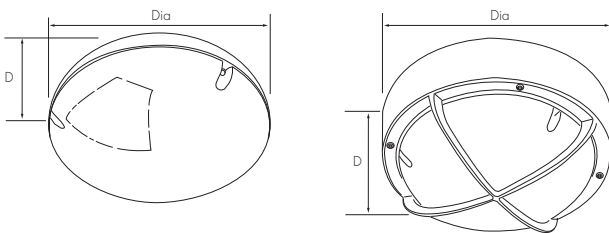
- 28W 2D compact fluorescent, 3500°K - GR10q4 cap 

MATERIALS

- Base - die cast aluminium, powder coated in white finish
- Pattress kit - die cast aluminium, powder coated in grey finish
- Diffuser - opal polycarbonate
- Geartray - steel, powder coated in Permawhite finish

INSTALLATION NOTES

- Suitable for ceiling or wall mounting
- BESA entry drill outs on rear, alternative drill outs for screw fixing
- Optional grille and pattress kit adds side conduit entry options
- Pattress fits flush over surface conduit and BESA box
- Geartray retained by screws
- 3 way, 1 x 2.5mm² terminal block
- Diffuser retained by allen key security screws
- Supplied complete with lamp

DIMENSIONS

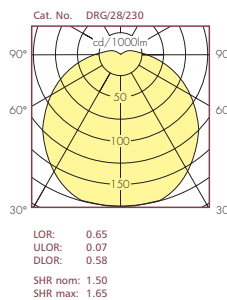
	Dia (mm)	D (mm)
Standard DRG	285	105
DRG with grille/pattress	334	147

OPTIONS

- High frequency and switch start control gear as standard
- Fully integral emergency conversion, 3 hour duration
- Intellem self test emergency versions available
- Full range of non-maintained, central battery and static inverter slaves available. See page 228 for full details
- Suitable for use on defined escape routes
- Optional die cast grille and pattress accessory

SPECIFICATION

To specify state: IP65 vandal resistant, robust exterior luminaire, with die cast aluminium base, tough polycarbonate opal diffuser and optional attractive and functional die cast grille and pattress, as JSB DRG range, part no. _____

PHOTOMETRIC DATA

Reflectances		Room Index									
C	W	F	0.75	1.0	1.25	1.5	2.0	2.5	3.0	4.0	5.0
70	50	20	34	40	44	48	52	55	58	61	63
	30		29	34	39	43	48	51	54	58	60
	10		26	30	35	39	44	48	51	55	58
50	50	20	33	38	42	45	49	52	54	57	59
	30		28	33	38	41	45	49	51	54	57
	10		25	30	34	37	42	46	48	52	55
30	50	20	31	36	40	42	46	49	51	54	55
	30		27	32	36	39	43	46	48	52	54
	10		24	29	33	36	41	44	46	50	52
0	0	0	22	26	30	33	37	40	42	45	47
BZ-class			5	5	5	5	5	5	5	5	5

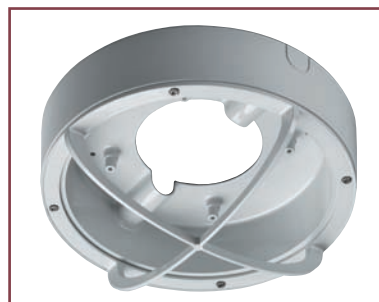
See page 422 for Design Guide

CATALOGUE NUMBERS

Lamp Rating	Gear Option	Cat. No.	Weight (kg)	Emergency Cat. No.	Weight (kg)
1 x 28W	Switch start	DRG1281240HPF	2.8	-	-
1 x 28W	High frequency	DRG28230	2.5	DRG283M230240	2.6
Description	Cat. No.	Weight (kg)			
Die cast grille and pattress kit	DRGACCKIT	2.0			

Emergency versions available with automatic testing functionality - see page 188 for system features
Contact our Technical Support and Application department for further details, telephone 01302 303350

Comprehensive emergency range. See page 228



Pattress kit, detailing channels for surface conduit



DRG without grille and pattress kit

DRG